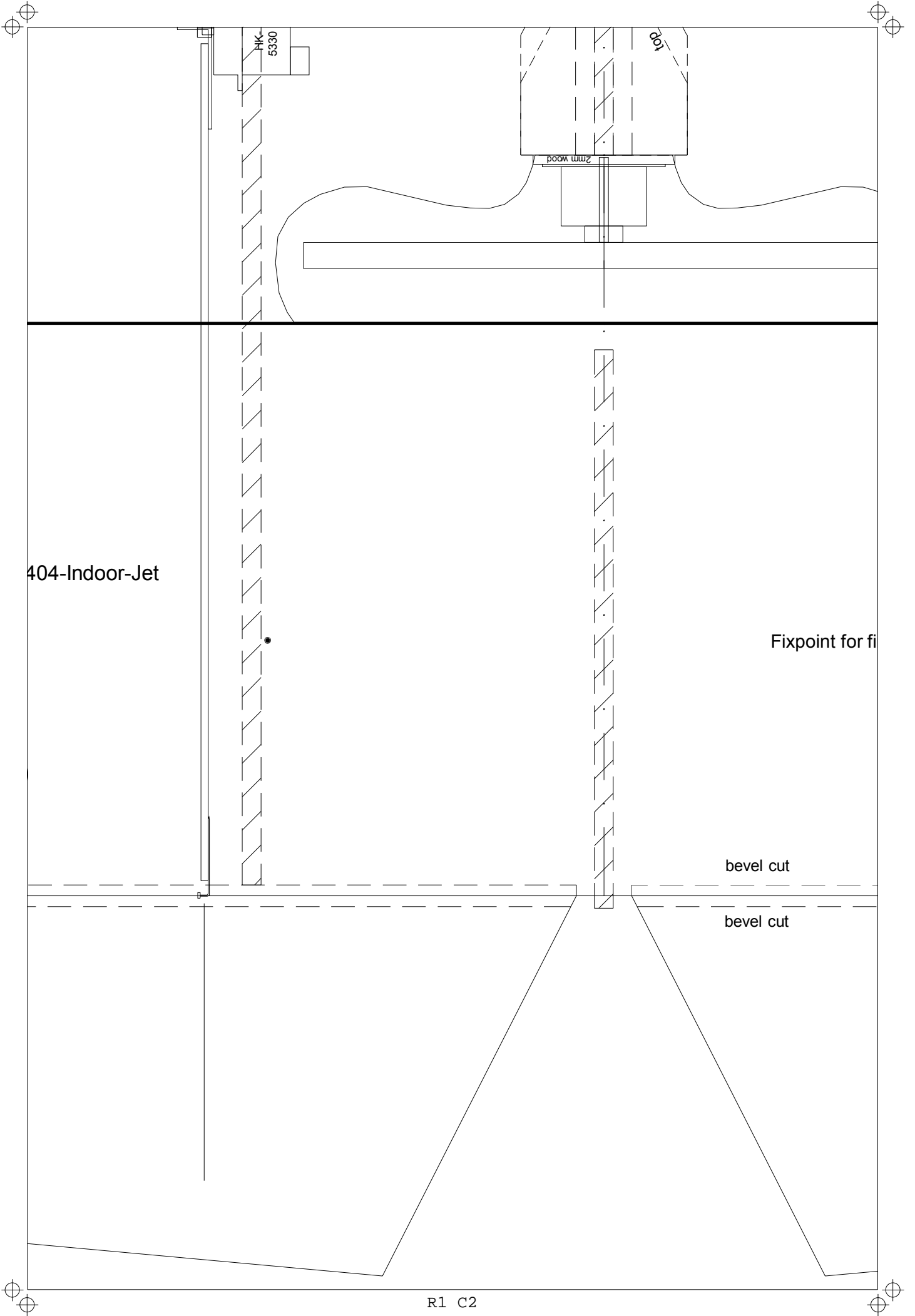
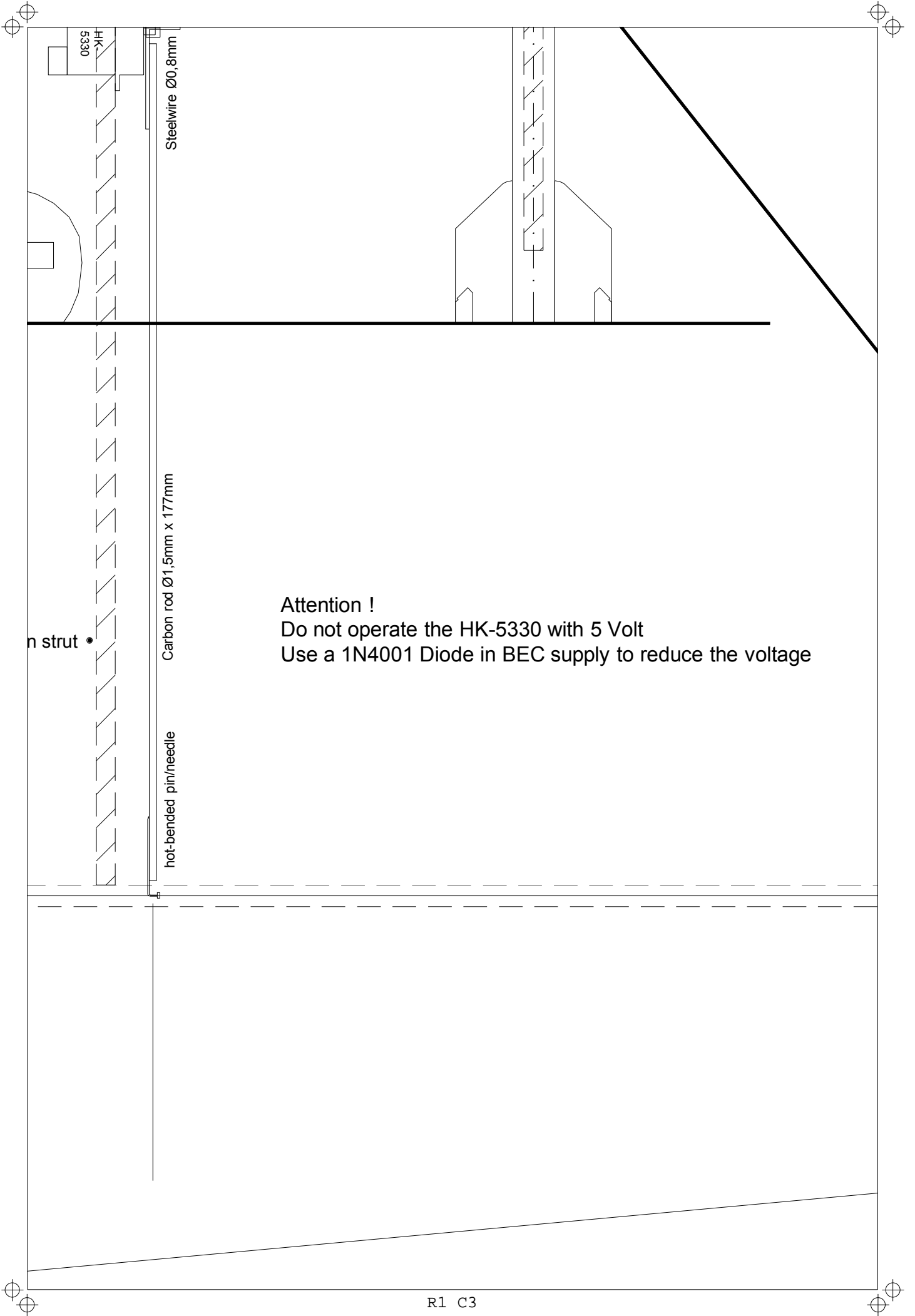


Original design and plans by Stig Henrikson  
see [www.rcgroups.com](http://www.rcgroups.com), search for "Indoor Jet" in "titles only"  
or go directly to <https://www.rcgroups.com/forums/showthread.php?2792>

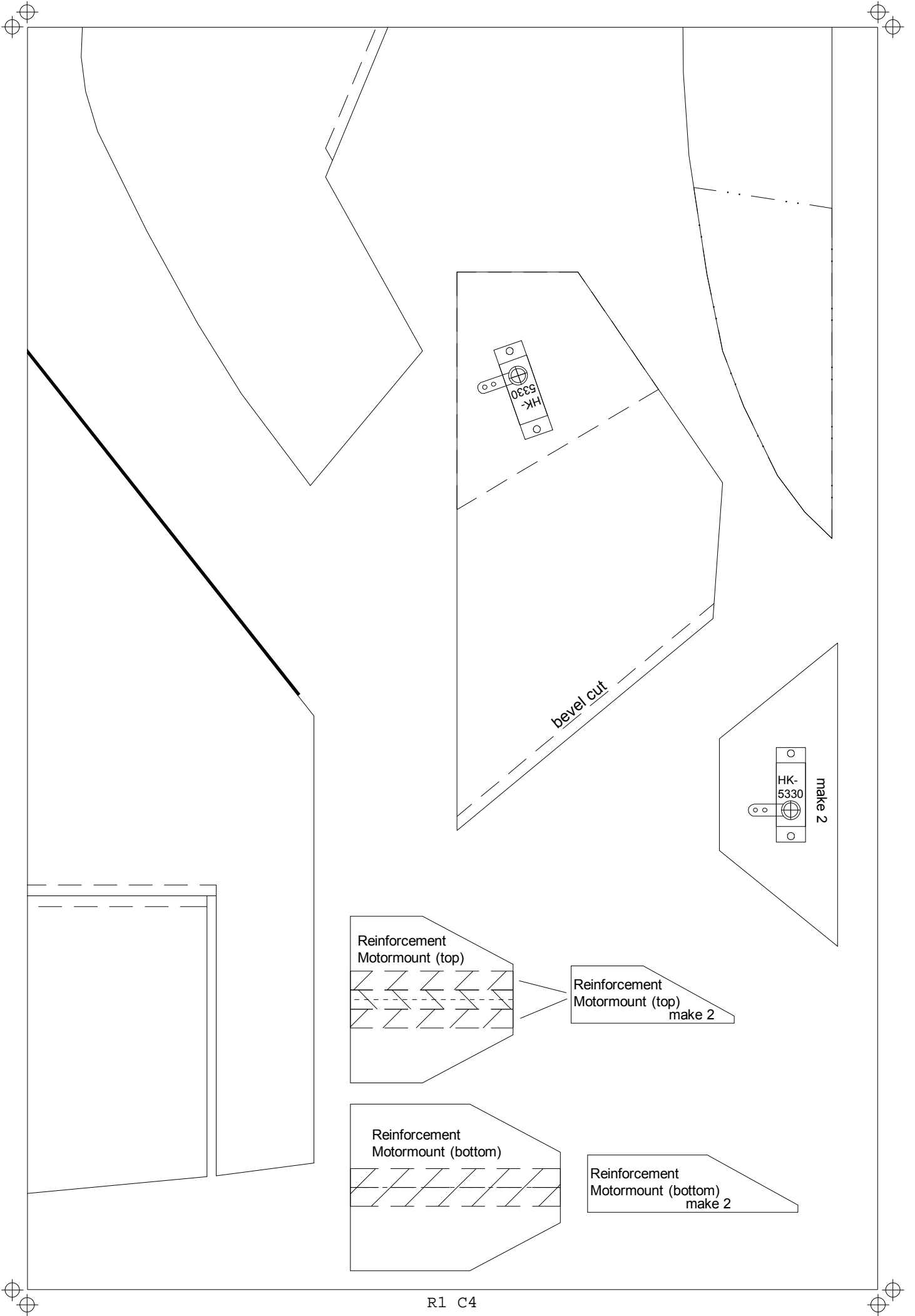
Redesign (minor shape changes, thicker carbon) by Robert  
<http://www.roberts-r2d2-bau.de/fmbindex.html>

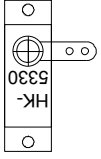
All Parts made of 4mm EPP 20g/dm<sup>3</sup>  
HobbyKing 1612 Brushless Outrunner 3200KV (HK1612-3200)  
GWS 5030  
HK-5330 Ultra-Micro Digital Servo 0.17kg / 0.04sec / 1.9g (9225000002)  
TURNIGY Plush 6A / .8bec/6g Speed Controller  
Diode 1N4001 (to reduce BEC Voltage to 4,3 Volt)  
Turnigy nano-tech 300mah 2S 35~70C Lipo Pack





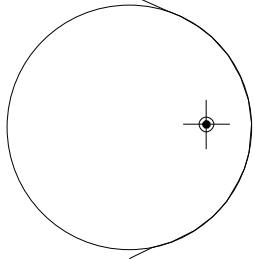
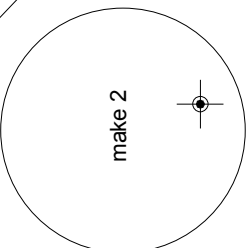
Attention !  
Do not operate the HK-5330 with 5 Volt  
Use a 1N4001 Diode in BEC supply to reduce the voltage



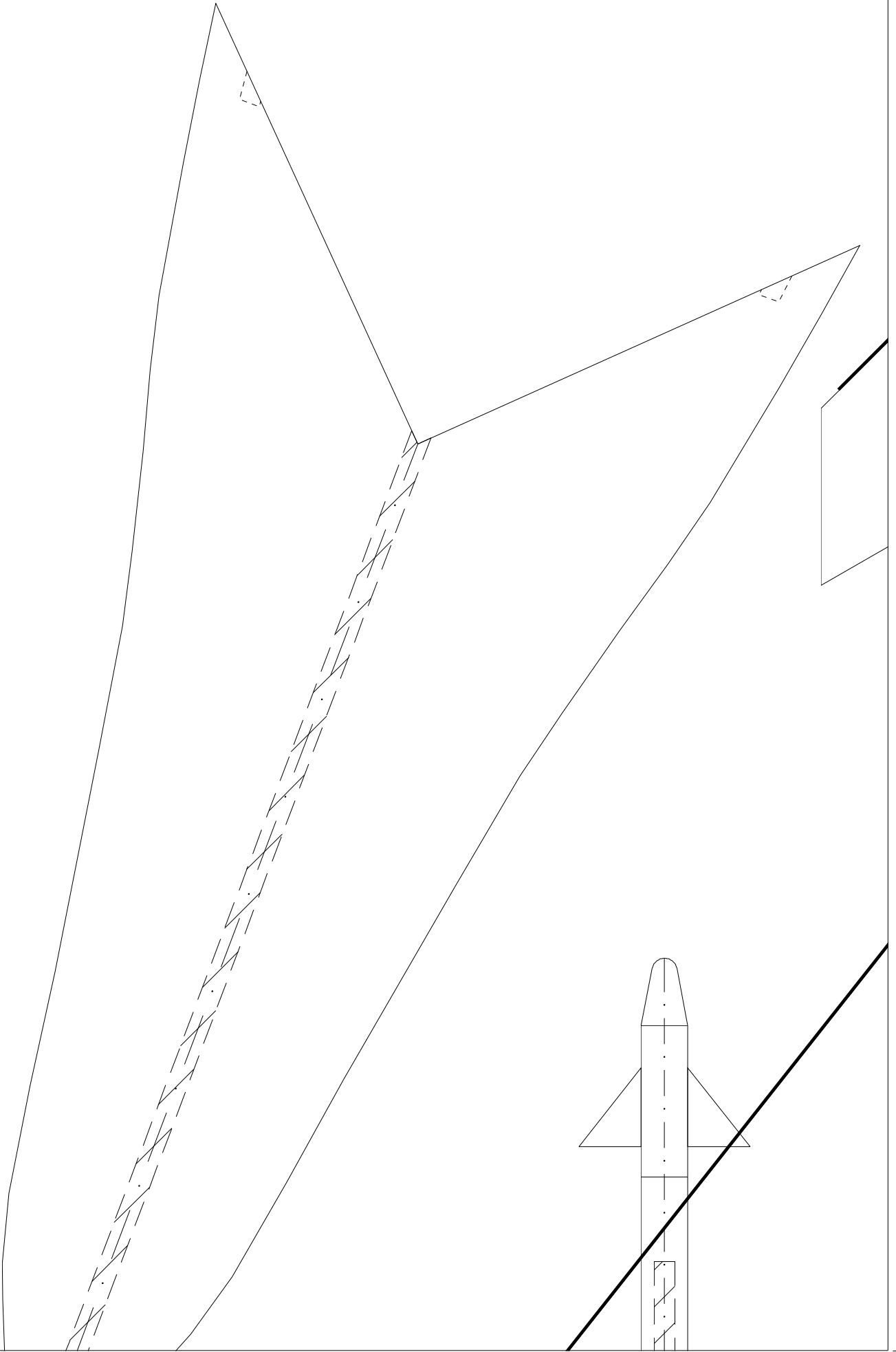


make 2

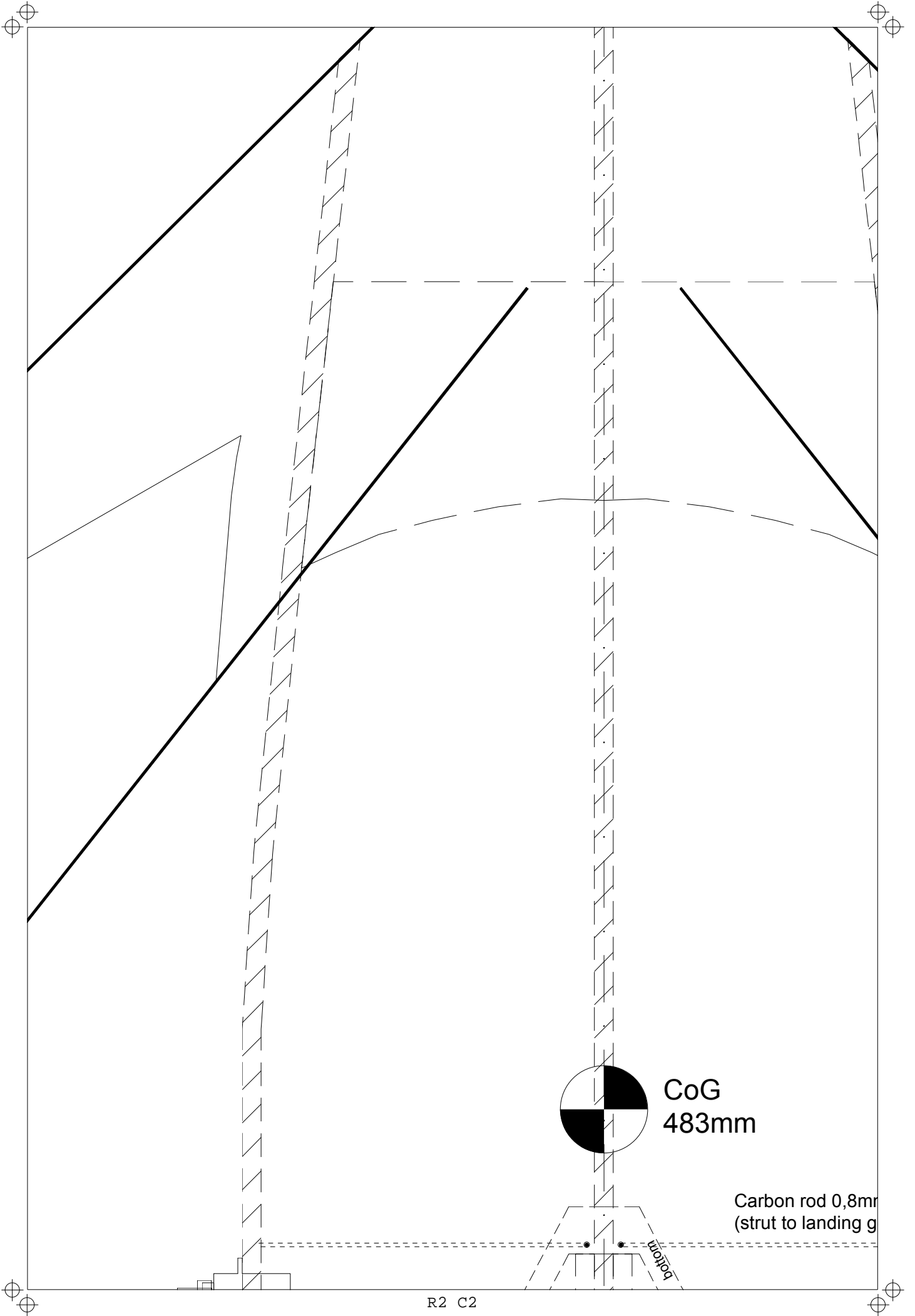
**Attention !**  
**Do not operate the HK-5330 with 5 Volt**  
**Use a 1N4001 Diode in BEC supply to reduce the voltage**



*Carbon spar 3mm x 0,5mm x 170mm*



R2 C1

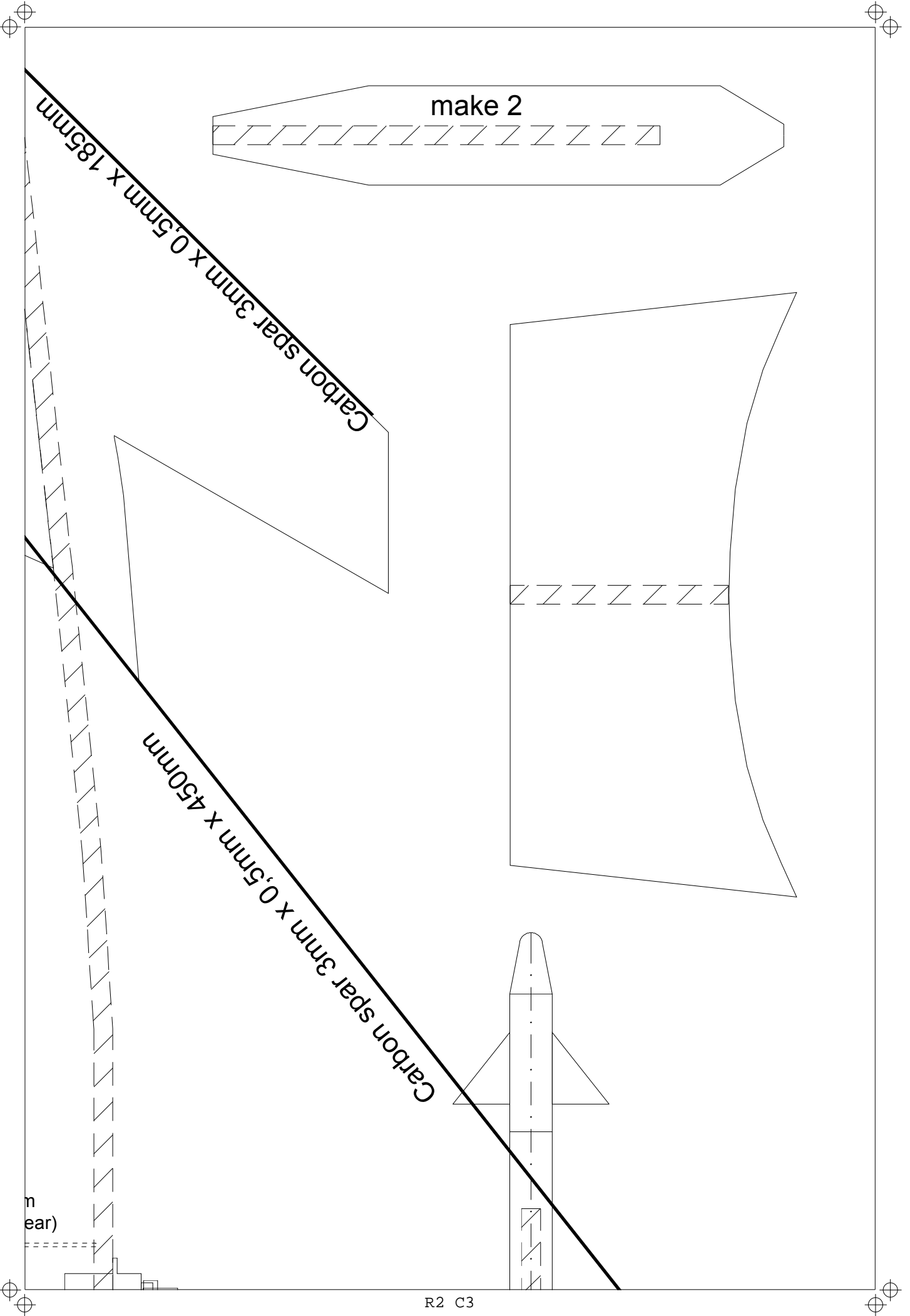


CoG  
483mm

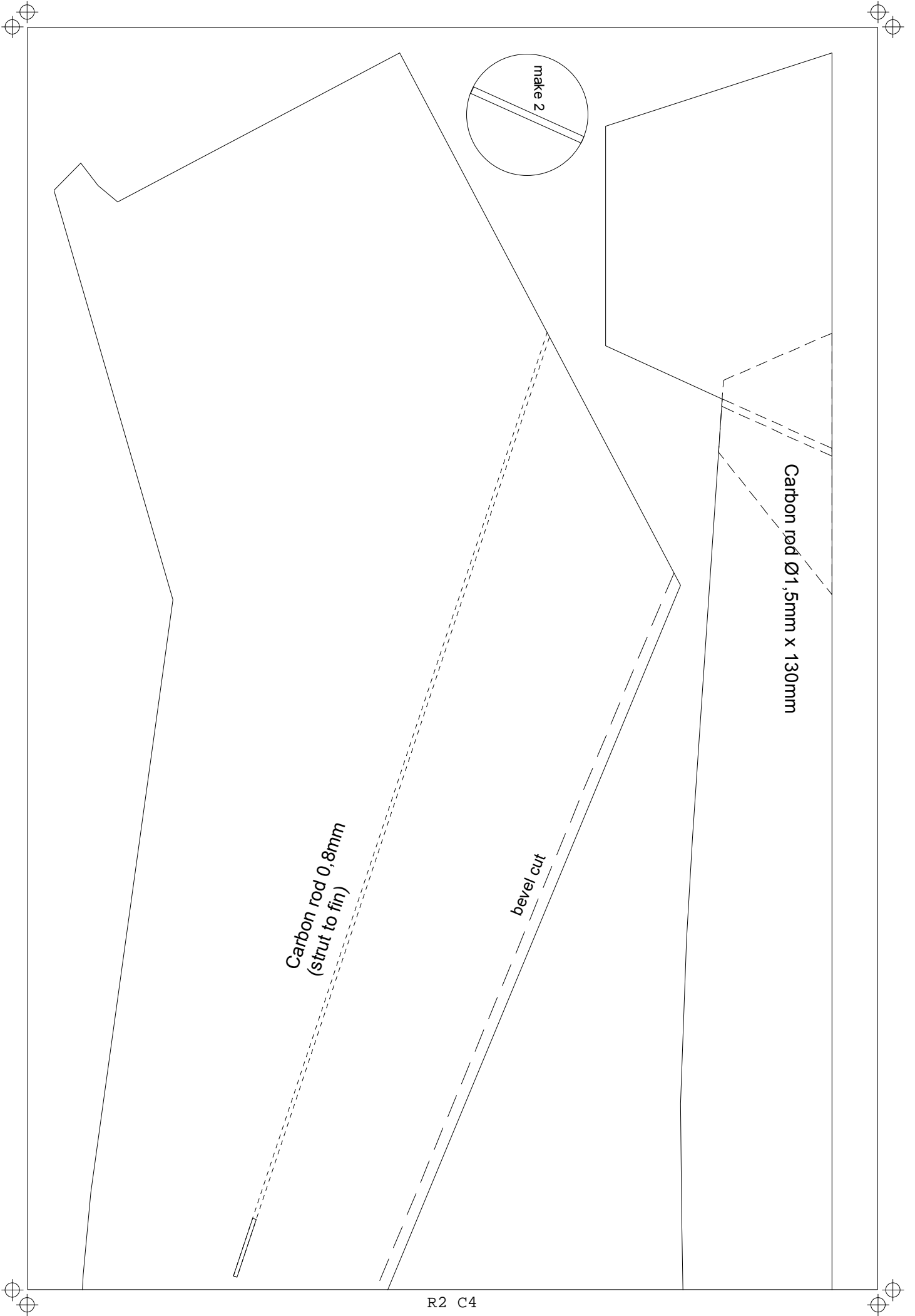
Carbon rod 0,8mr  
(strut to landing g)

R2 C2

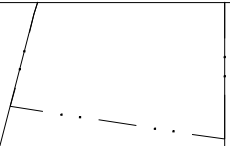
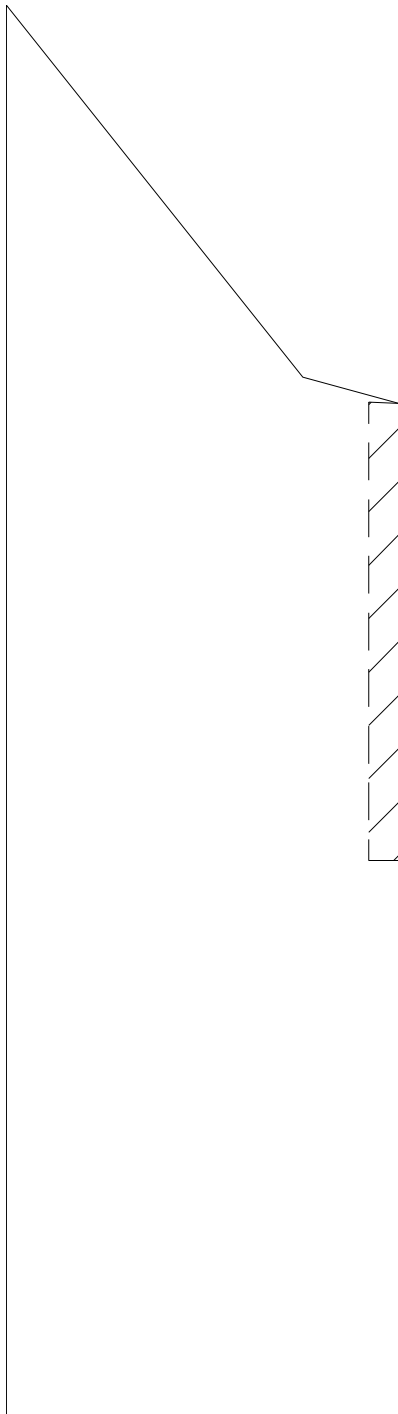
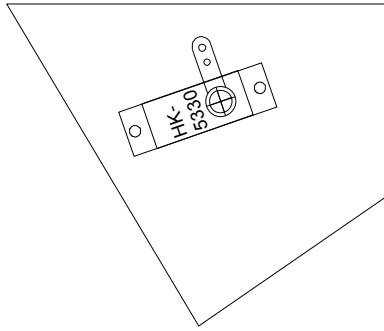
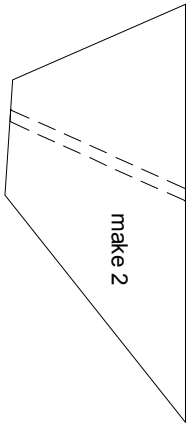
bottom



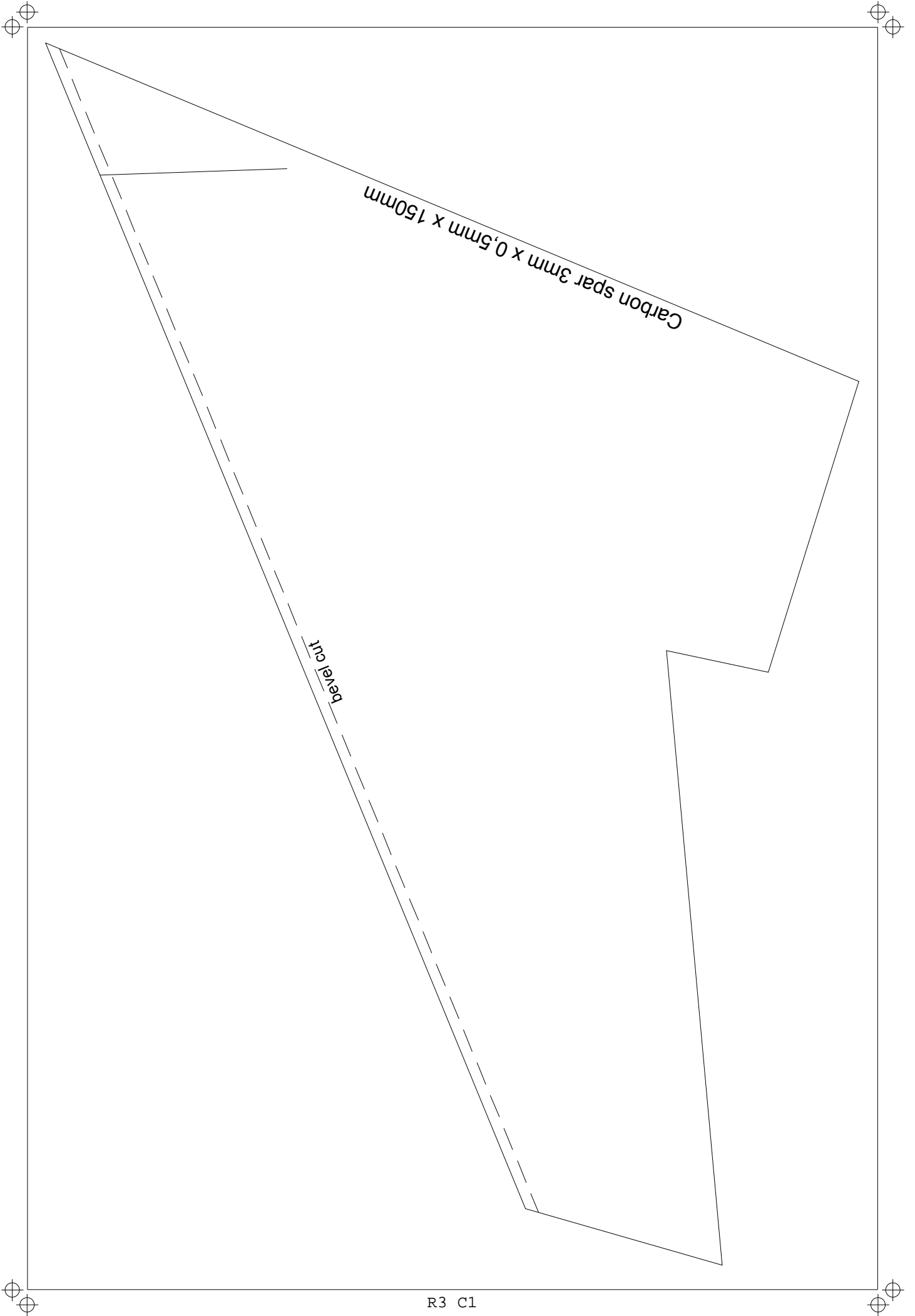


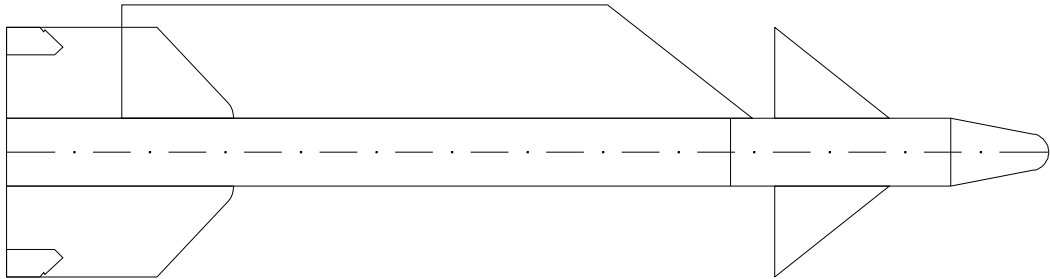
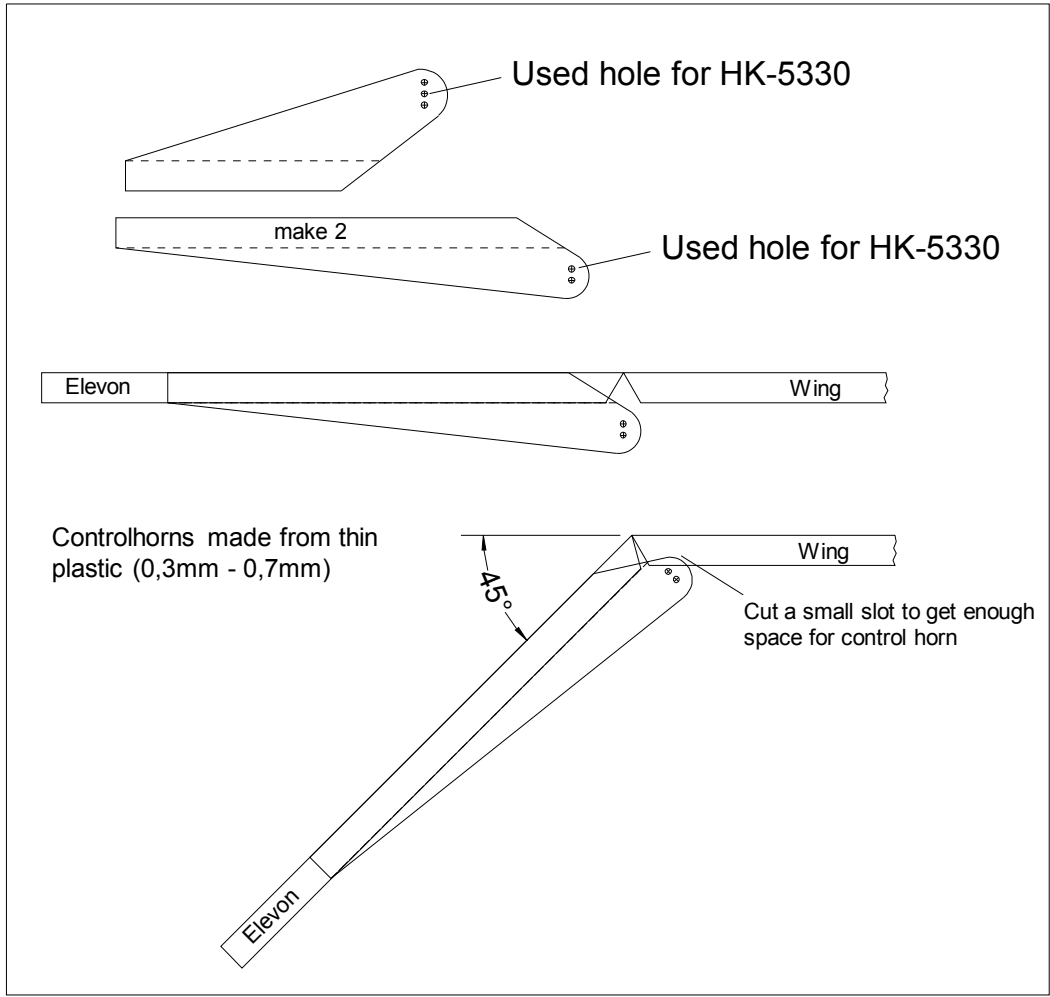


R2 C4

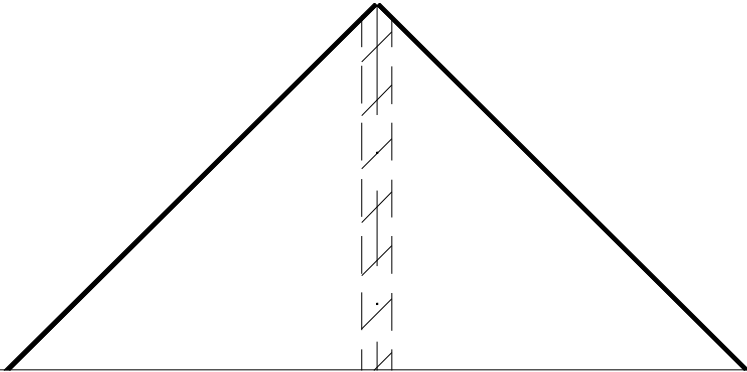
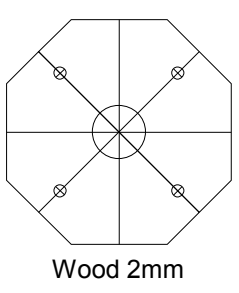


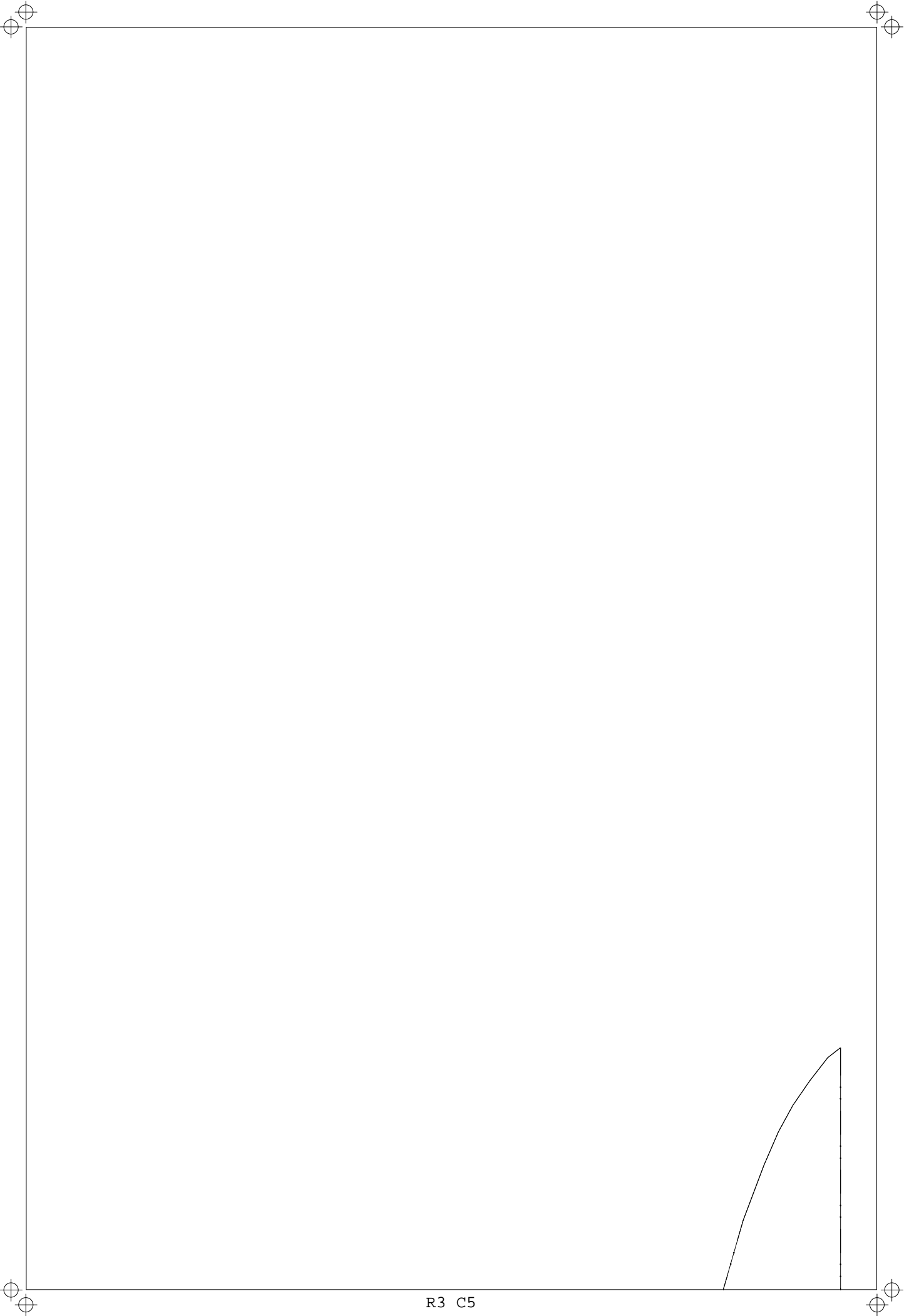
R2 C5





Missile fins made of 3mm EPP  
 Missile body made of thick drinking straw  
 Missile nose made of heat shrink





R3 C5